

# Installation Speaker

# WS-15T/30T/50T/80T



▶ WS-15T ▶ WS-30T ▶ WS-50T ▶ WS-80T

## FEATURES

- High-quality Trans for Low/High
- Water and damp-proof of IP54
- Designed to Minimize Sound Distortion
- Consolidated Transmission of Low-pitched Sound
- Aesthetic Design
- Ease of Installation
- EASE, EASE Focus Data

## SPECIFICATIONS

|                         |      | WS-15T  | WS-30T   | WS-50T   | WS-80T   |
|-------------------------|------|---|--|--|--|
| TYPE                    |      | 1 way full range                              | 2 way passive  | 2 way passive  | 2 way passive  |
| FREQUENCY RANGE (-10dB) |      | 110Hz-20kHz                                   | 100Hz-20kHz  | 100Hz-20kHz  | 100Hz-20kHz  |
| SENSITIVITY(1m/1W)      |      | 84dB  | 85dB   | 87dB   | 90dB   |
| COMPONENT               | LF   | 2.5" full range                               | 4"   | 5"   | 6.5"   |
|                         | HF   |   | VC 13mm  | VC 13mm  | VC 13mm  |
| POWER HANDLING          | CONT | 15W(RMS)                                      | 30W(RMS)   | 50W(RMS)   | 80W(RMS)   |
|                         | LOW  | 8Ω  | 8Ω   | 8Ω   | 8Ω   |
| NOMINAL IMPEDANCE       | HI   | 100V  | 30/15/7.5/3.8/1.9(W)_154.1Ω/<br>313.4Ω / 626.4Ω/1.25kΩ/2.47kΩ/4.95kΩ | 50/25/13/6.5/3.3(W)_92.6Ω/<br>189.6Ω/376.6Ω/720.7Ω/1.43kΩ/2.81kΩ | 80/40/20/10/5(W)_59.4Ω/<br>120.9Ω/239.8Ω/478Ω/956.1Ω/1.9kΩ |
|                         | 70V  | 15/8/4/2(W)_315.7Ω/<br>643.4Ω/1KΩ/1.9KΩ/3.1KΩ |  |  |  |
| CONNECTORS              |      | Screw terminal 2P                             |  |  |  |
| ENCLOSURE MATERIAL      |      | ABS RESIN                                     |  |  |  |
| WEIGHT                  |      | 0.89kg/1.96lb                                 | 1.7kg/3.74lb   | 2.4kg/5.29lb   | 3.6kg/7.49lb   |
| DIMENSIONS(W x H x D)   |      | 92x120x114(mm) /<br>3.6x4.7x4.5(in)           | 139x210x129(mm) /<br>5.5x8.3x5.1(in)                                 | 173x250x150(mm) /<br>6.8x9.8x5.9(in)                             | 210x311x169(mm) /<br>8.3x12.2x6.7(in)                      |

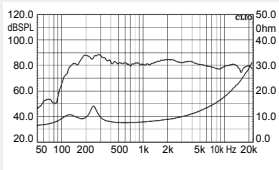
\* Design and specification are subject to be changed for the improvement of product quality without pre notice.

\* The initial state of the product is set to "2W(WS-15T)/1.9W(WS-30T)/3.3W(WS-50T)/5W(WS-80T)".

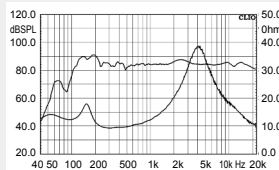
\* **When using high impedance, do not convert to 8Ω . It may cause an outbreak of fire due to overvoltage pressure.**

## PERFORMANCE CURVE

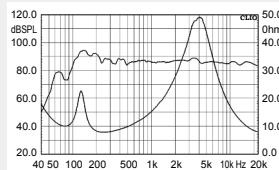
▶ WS-15T



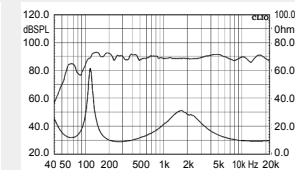
▶ WS-30T



▶ WS-50T

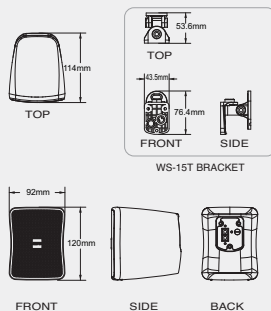


▶ WS-80T

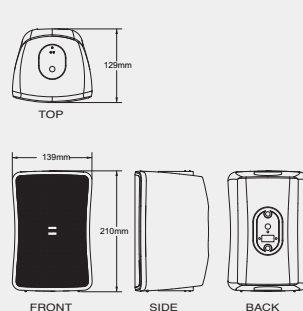


## DIMENSIONAL

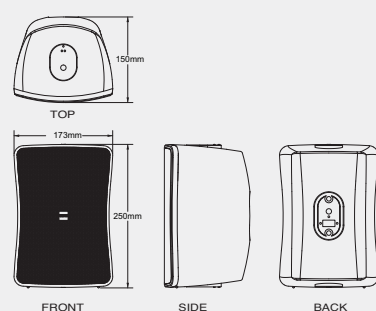
▶ WS-15T



▶ WS-30T



▶ WS-50T

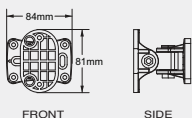
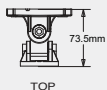
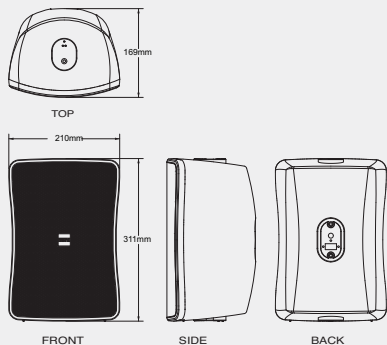


# WS-15T/30T/50T/80T



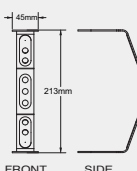
## DIMENSIONAL

### ▶ WS-80T

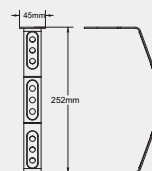


KNUCKLE BRACKET  
(WS-30T/WS-50T/WS-80T)

### ▶ WS-30T

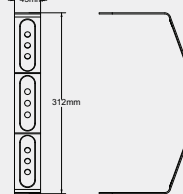


### ▶ WS-50T



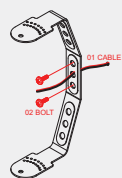
U-BRACKET

### ▶ WS-80T

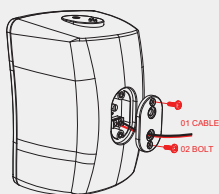


## U-BRACKET INSTALLATION

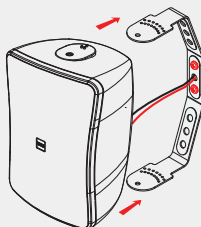
### ▶ WS-30T/WS-50T/WS-80T



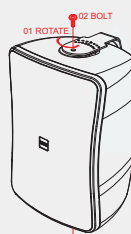
STEP 01



STEP 02



STEP 03



STEP 04



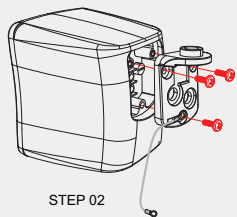
STEP 05

## KNUCKLE BRACKET INSTALLATION

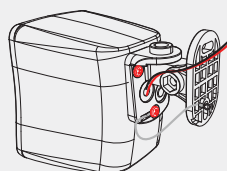
### ▶ WS-15T



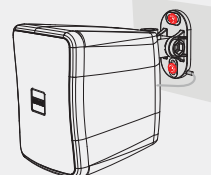
STEP 01



STEP 02



STEP 03

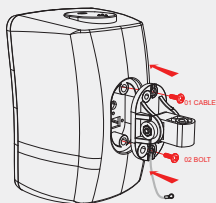


STEP 04

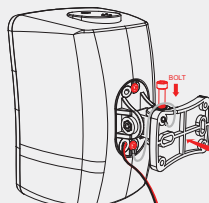
### ▶ WS-30T/WS-50T/WS-80T



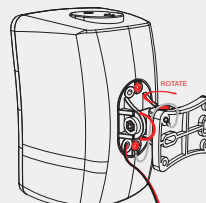
STEP 01



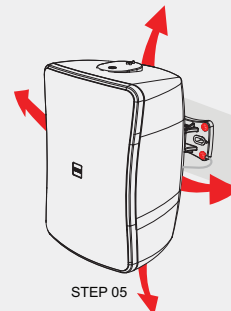
STEP 02



STEP 03



STEP 04



STEP 05

\* When you install outdoor, Please install by inserting the waterproof back-gasket.



## RED OFFICE SUPPLIES LIMITED

📍 Eastern Commercial Complex, 73 Kakrail, 7th Floor,  
Suite#12, Ramna, Dhaka-1000, Bangladesh

☎ 09614 61 61 61 ✉ info@redoffice.com.bd

🌐 [www.redoffice.com.bd](http://www.redoffice.com.bd)